

Tat Hing is your swimming pool's expert



OKEYH Pool Products



PRODUCTS CATALOGUE

Stable supply, Honest and Reliable

Head office (Hong Kong)

Phone:
Headquarters : 852-2606 5467
Online Sales : 852-2600 5176 / 852-2600 5151
Technical Hotline : 852-9834 8516
Fax:
Headquarters : 852-2974 0866
Online Sales : 852-2600 5177

Email:
Engineering Sales :
publictathing@tathingpool.com.hk
Online Shopping :
sales@tathingpool.com.hk
Address :
Workshop F, G/F, Universal Industrial Centre, 19-25 Shan Mei Street, Fotan,
Shatin, New Territories, Hong Kong SAR, China



達興泳池有限公司
Tat Hing Pool Limited

*The final interpretation rights
of this catalogue is reserved by
TAT HING POOL LIMITED*

達興水處理設備有限公司/達興泳池有限公司

Tat Hing Water Processing Co., Ltd./Tat Hing Pool Limited

About Us

Tat Hing Water Processing Co., Ltd./Tat Hing Pool Limited has been providing efficient, quality service to the public since 1984.

The company has set up factories in Guang Dong (Yuen Hoi. Co. LTI.), supply stability, honest and reliable.

Sub-brand of the Company (OKEYH Pool Products) also exports services, excellent reputation.

Business

1. The provision of swimming pools and water parks system consultancy, design, installation services
2. Wholesale Italy, France, the operators of plastic furniture
3. Deputy Netherlands sauna, steam bath and massage bath / pool
4. Manufacture of large pools of water filters, water pumps and related equipment
5. Produce Steamer, sauna and related equipment
6. Agents and maintenance of imported automatic suction pool underwater device

Due to a wide range of our products,
if you need our product catalog and price list,
please contact us.

We are willing to provide you with
the best products and most considerate service.



OKEYH POOL PRODUCTS

澳奇，你的泳池好拍擋！！
Okeyh is the best partner of
your swimming pool !!



OKEYH Pool Products

OKEYH POOL PRODUCTS



OKEYH, your pool's best partner!!

OKEYH can provide good quality products for your Swimming Pool.

"What's New" highlights our most recent innovations in pool and spa equipment—advances that can offer better energy efficiency, longer service life, more functionality, improved water quality, easier operation and maintenance, enhanced safety features, or more spectacular effects for your pool, spa, or water feature.

OKEYH POOL LIMITED franchise the following operations:

- The provision of swimming pools and water parks system consultancy, design, installation services;
- Manufacture of large pools of water filters, water pumps and related equipment.

The brand "OKEYH" was established by the TAT HING POOL LIMITED.

We have already launched different types of swimming pools and spa equipments.

Including sand filters, circulating water pumps, water heaters, sauna steamers and swimming pool cleaning accessories. Our workshop is located in He Tang Town, Jiangmen City, Guangdong Province. Welcome to visit our factory.

We are also providing OEM production of swimming pool equipments. Welcome Inquiry.

Due to a wide range of our products, if you need our product catalog and price list, please contact us. We are willing to provide you with the best products and most considerate service.

Contact Us:

Company Name:

OKEYH POOL LIMITED (JiangMen He Tang Yuen Hoi Company Limited)

Phone: Miss Gao : (86)0750-3709314 / (86)0750-3709305

Fax: (86)0750-3709304

Email: YUENHOI@163.com

Address: Hetang Chen, Xiao Cun Gong Ye Qu, Pengjiang District, Jiangmen City, Guangdong, China

Website: www.okeyh.com.cn

www.okeyhpool.cn



澳奇泳池產品
OKEYH POOL PRODUCT

OKEYH, YOUR POOL MASTER

DIRECTORY

Pumps

- KL and KLP Series.....2
- KT Series.....3
- KH Series.....4
- KRF Series.....5

Electrical Pool Equipment (Automatic Accessories)

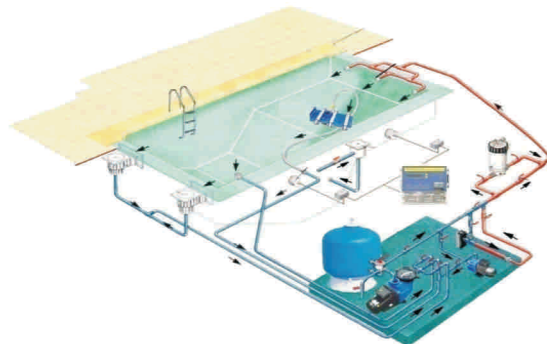
- Salt Chlorinator (ADVAN CHLOR).....6-8
- ORP/pH/Temp Digital Controller.....9
- Electrical Six-Way Multiport Valve.....11
- Electrical Multiport Valve Controller.....12

Pool Fittings and Accessories

- Wall Mount Pool Skimmer TH-1083.....13
- Wall Mount Pool Skimmer TH-1082.....14-16
- Pool Fittings Accessories and Drains.....17-20
- Pool Fittings - Jet Air Nozzle.....21
- Pool Accessories.....22-24
- PVC Pipe Fittings.....25-26
- Pool Plastic Grating.....27
- Pool Racing Lane and Float Ball.....28-29

Pool Lights and Fountain Lights

- Wall Mount Pool Lights.....30-31
- LED Pool Lights and Fountain Lights Series.....32-35



Filters

- Horizontal Bobbin Wound Sand Filter.....37
- FA(DFB) Series - Deep Bed Type 1.....38
- FA Series - Deep Bed Type 2.....39
- FB Series - Side Mount Type.....40-41
- FB Series - Top Mount Type.....42
- FC Series - Top Mount Clamp Type.....43
- PF Series - Top Mount Type.....44
- Six Way Multiport Valve.....45-47
- Cartridge Filter.....48-49
- All-in-one Filter System.....50
- FI Series - Mild Steel Vessel Type.....51
- Hub and Nozzle.....52-53
- Pisciculture Series - Six Way Multiport Valve.....55
- Pisciculture Series - FX Series Filter.....56

Pool Essential Furniture

- Starting Block and Pool Ladder.....57
- Stainless Steel Life Guard Chair and Take Up Reel...58

Fountain Series

- Jumping Jet Fountain HT-950.....60
- Fountain Nozzle.....61-66
- Brass Curtain Fountain Nozzle.....67

Spa and Sauna Series

- Electric Heater for Spa.....68-69
- Steam Generator.....70-71
- Sauna Accessories.....72-74

PUMPS



KL and KLP Series



KL and KLP series pump are low maintenance pump series for most of domestic spas, above-ground and in-ground pools requiring quiet self-priming action. These series pumps operate extremely quiet. They can be easily installed and repaired if necessary due to their special design. The outlet direction can be shifted to either left or right other than upward.

KL & KLP Features:

1. Heavy duty motor.
2. (KLP) Durable plastic basket.
3. Graphite and pottery mechanical/seal.
4. Automatic thermal overload protector.
5. Weather protected to IP 54 grade F.
6. Pump base can be disassembled easily.
7. Stainless steel shaft.
8. Rotary type (KL) pump clear cover.
9. Exclusive corrosion-proof glass loaded polypropylene housing for all weather performance.
10. Barrel union connection for ease of installation.
11. Silent check valve applied at outlet connection.
12. Three different outlet directions alternative (Left, Right or Up).
13. Energy efficient with extremely quiet operation.
14. 1 1/2" FIP Connection

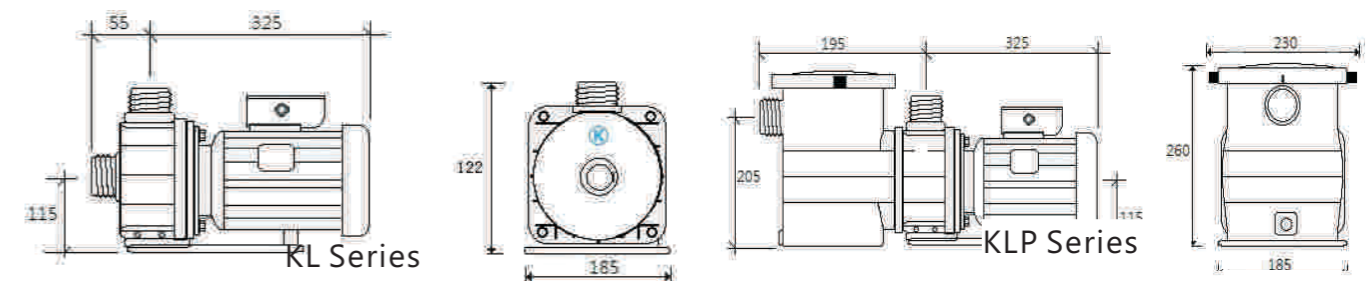


KL Series



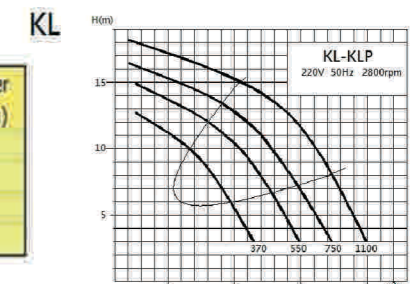
KLP Series

Connected with 48mm or 50mm union



Model	Watts	Volt	HP	Amp	RPM	Inlet mm	Outlet mm	Discharge Head in Metres (M ³ /H)				Sand Filter Dia. (mm)
								3M	5M	8M	10M	
KL/P-37	370	230	1/2	1.8	2800	48/50	48/50	11.5	10.2	8.2	6.4	450
KL/P-55	550	230	3/4	2.6	2800	48/50	48/50	14.8	13.7	11.8	10.3	500
KL/P-75	750	230	1	3.5	2800	48/50	48/50	17.3	16.1	14.2	13.2	600
KL/P-110	1100	230	1 1/2	5.0	2800	48/50	48/50	19.8	18.8	17.1	16.1	750

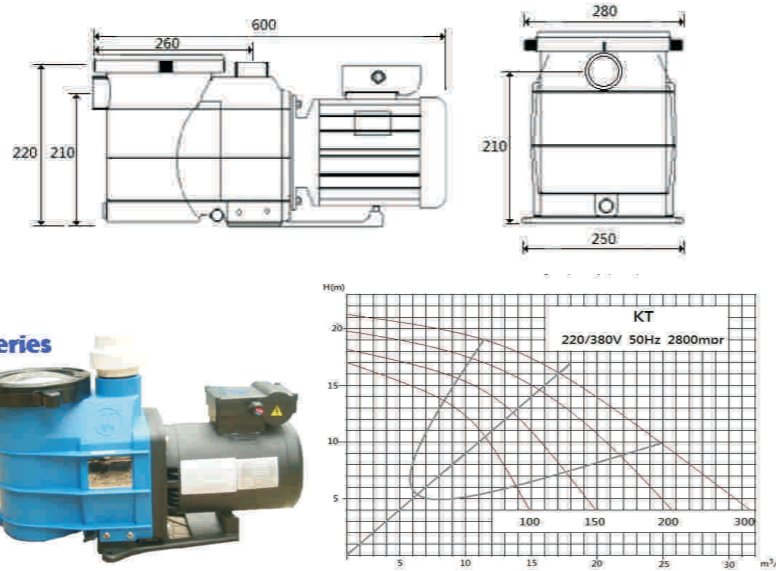
KL series pumps do not have strainers while KLP have.



KT Series



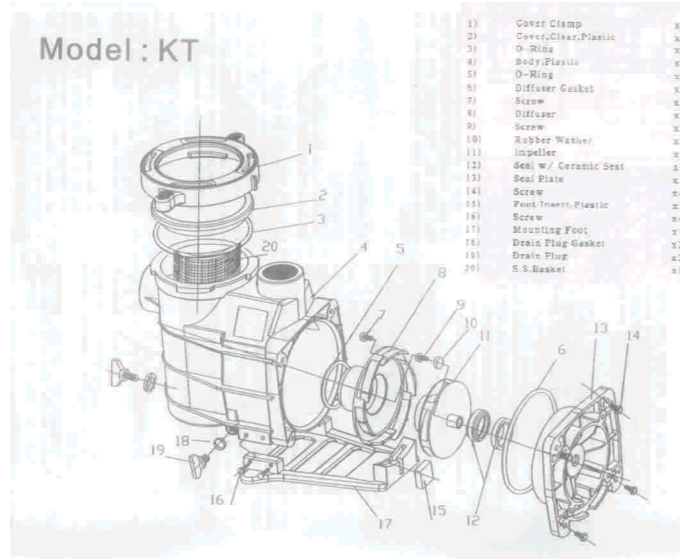
KT Series



KT series pumps are high performance, low maintenance pumps for above-ground and in-ground pools requiring self-priming action. These series pumps are extremely quiet, compact and engineered for maximum power output with low energy consumption. They are economic choice for residential pools. Extensive research and a commitment to ongoing product development ensure that KT continues to develop a wide range of innovative high quality pumps.

KT features including:

1. Heavy duty, ALUMINIUM casing flange motor.
2. Durable plastic basket.
3. High quality graphite and pottery mechanical seal.
4. Automatic thermal overload protector.
5. Weather protected to IP 54 grade F.
6. Pump base can be disassembled.
7. Stainless Steel shaft.
8. Rotary clamp and clear cover.
9. Exclusive corrosion-proof glass loaded polypropylene housing for all weather performance.
10. Barrel union connection for ease of installation.
11. Silent check valve applied at outlet connection.
12. Energy efficient with extremely quiet operation.
13. 2" FIP Connection



Model	Watts	Volt	HP	Amp	RPM	Inlet mm	Outlet mm	Discharge Head in Metres (M ³ /H)				Sand Filter Dia. (mm)
								5M	8M	12M	15M	
KT-100	750	220	1	3.4	2800	50	50	14.8	13.3	11.2	7.8	600
KT-150	1100	220	1 1/2	5.3	2800	50	50	19.7	17.7	14	10.6	750
KT-200	1500	220	2	7.0	2800	50	50	25.6	23.2	18.5	15	900
*KT-300	2200	220/380	3	10.8/5.8	2800	50	50	31.5	28.1	22.3	14.6	1000

* KT-300P1 for single phase, 220V~240V
 * KT-300P3 for three phases, 380V~415V

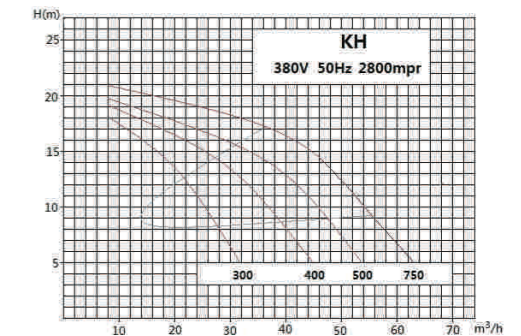
Packing Size : 64x26x31cm

KH Series

The KH series pumps are designed for commercial pool & spas which require the pumps to give higher meter head and flow rate. These series pumps are very quiet, compact and engineered for maximum power output with low energy consumption.

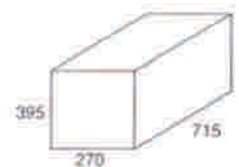
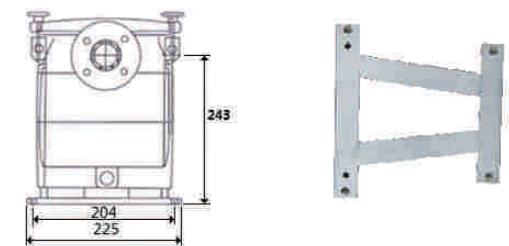
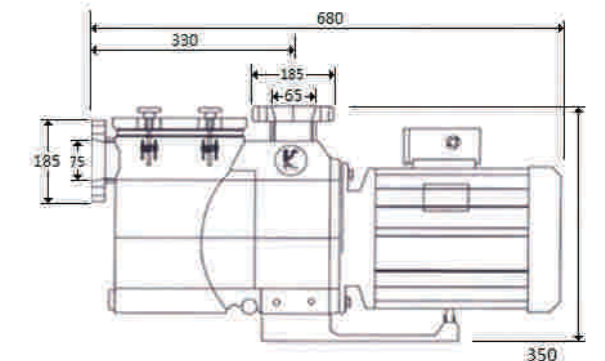


KH Series



KH Features including:

1. Heavy duty motor with IP 54 grade F Waterproof Standard.
2. Stainless steel (304) basket.
3. High grade mechanical seal.
4. Thermal overload protector.
5. Pump base can be disassembly.
6. Stainless steel shaft.
7. 4 screws type (series KH) pump clear cover.
8. Exclusive corrosion-proof glass loaded polypropylene housing for all weather performance.
9. Energy efficient with extremely quiet operation.
10. 2-1/2" MIP or 2-1/2/3" Flange connection.
11. Bigger Impeller & improved diffuser



Model	Watts	Volt	HP	Amp	RPM	Inlet mm	Outlet mm	Discharge Head in Metres (M ³ /H)			Sand Filter Dia. (mm)
								5M	10M	15M	
KH-300	2200	380	3	5.8	2800	65	65	33	24	14	900
KH-400	3000	380	4	7.8	2800	75	65	44	35.5	27	1000
KH-500	4000	380	5	10	2800	75	65	56	48.1	33.2	1200
KH-750	5000	380	7.5	13	2800	75	65	64	54	45	1500

ADVAN CHLOR

SALT WATER TREATMENT SYSTEMS

KRF Series



KRF series pumps are commercial use high performance centrifugal pump.

KF can be used either in 6" (inlet) 4"(outlet) or 4"(inlet) 4"(outlet).

The pump unit is painted with high quality enamel paint. The standard unit is supplied with 380V, 2800 rpm, 50HZ, 3 phases.



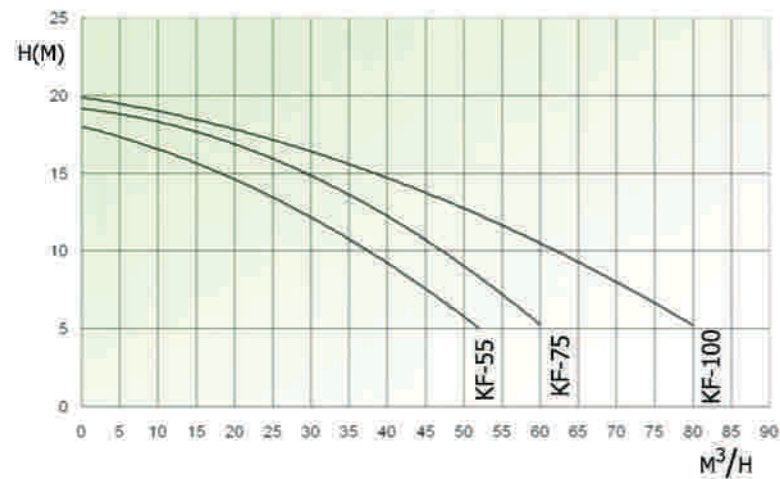
Model KF

Materials of the pump parts:

1. Pump casing, impeller and strainer in cast iron
2. Basket, mechanical seal and shaft in stainless steel.
3. Motor available either in aluminum or cast iron.



Model KFP



Model	Watts	Volt	HP	Amp	RPM	Inlet mm	Outlet mm	Discharge Head in Metres (M ³ /H)			Sand Filter Dia. (mm)
								8M	10M	12M	
KF-55	4100	380	5.5	5.8	2800	100	100	44	40	36	1400
KF-75	5500	380	7.5	7.8	2800	100	100	56	53	47	1500
KF-100	7500	380	10	10.5	2800	100	100	72	64	58	1600



Time

SAVE

Money



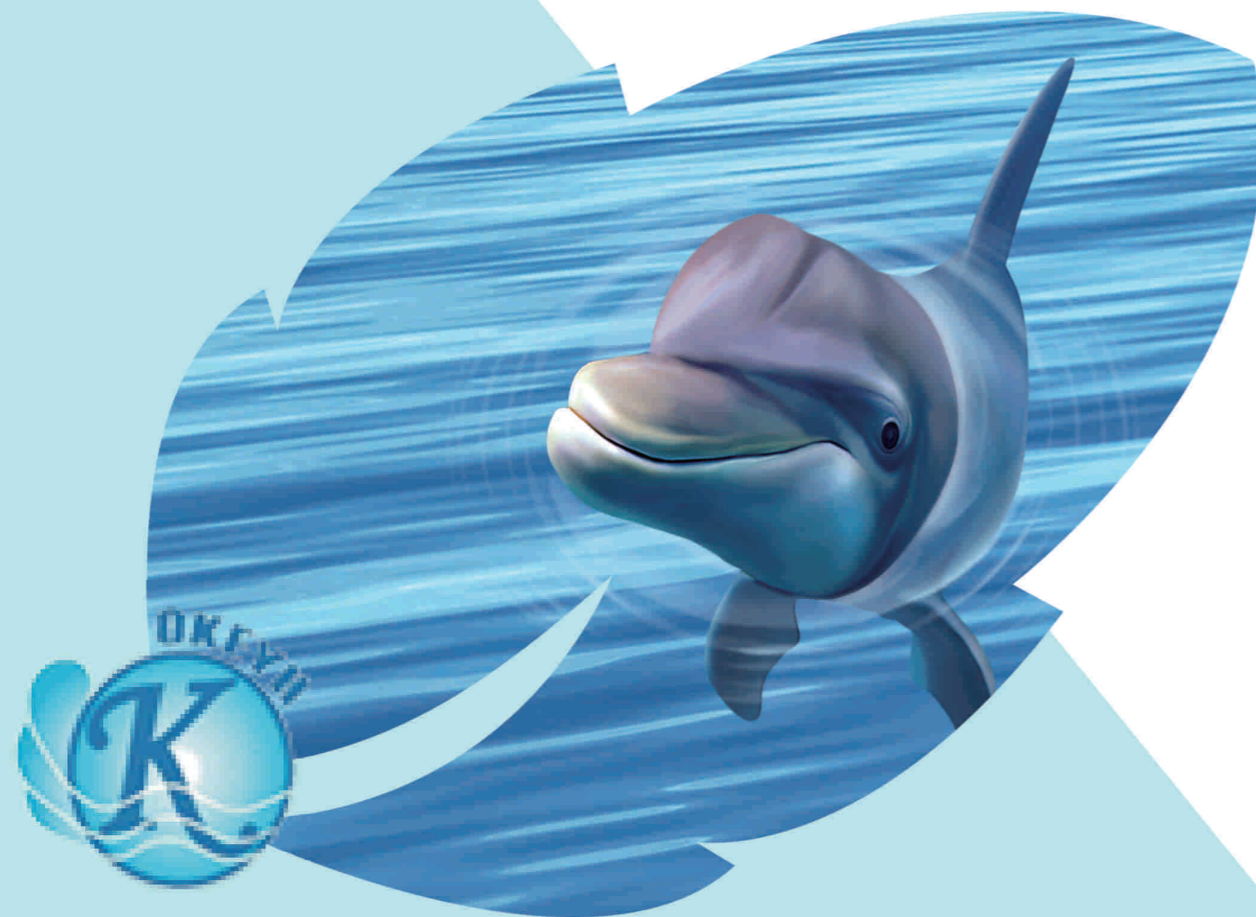
Model:AC24-AC30



Model:AC12-AC20

Salt Chlorinator & Chemical Controller

**Save time and money
Easy to install and operate**



ADVAN CHLOR

Chemical Controller



Electrical Pool Equipments

Salt Chlorinator (ADVAN CHLOR)

ADVAN CHLOR is a high efficiency salt chlorination system that let you enjoy sparkling clear pool water without toxic chemical .

The process of chlorine production by Salt Chlorination system (Advan Chlor) is known as Electrolytic Generation. This process simply produces chlorine from a small amount of salt that is added to your pool water.

ADVAN CHLOR comprises with 2 mainly components that are electronic power supply which controls the operation of the system, and electronic cell which connects easily to standard pool circulation system.

ADVAN CHLOR Advantage

1. Eliminates purchase cost of expensive chlorine sanitizer
2. Inexpensive natural salt (Sodium Chloride-NaCl) to the pool water
3. The saline solution is passed through an electrolytic cell installed in the pipe work near the filtration system
4. Chlorine is manufactured in the cell by the electrolysis of the saline solution
5. Eliminates the storage & handling of dangerous chlorine
6. Reduces the commercial manufacture of chlorine so is environmentally friendly
7. Fully automatic, makes chlorine when the filtration system operates
8. Approximately the same salinity as a tear drop, soothing to eyes and skin
9. Produces sanitized, sparkling, healthy, clear pool water
10. Non-corrosive to all pool surface

ADVAN CHLOR Features

1. Large cell housing for high flow rates
2. Battery back-up for time/clock is added adjustment
3. 7 days timing setting, 10 times on/off setting per day
4. Digital Display & LED indicator UV & waterproof cabinet
5. State of the art electronic technology water flow detection device
6. 10-100% chlorine output function

The ADVAN CHLOR system is suitable for residential and commercial applications by choice of models available.

Contact your local pool equipments suppliers for detail.



Model	Voltage in(v)	Amperage (Max)	DC Out	CurrentRange (A)	Pool Vol. (M3)(Indoor)	Pool Vol. (M3)Outdoor
AC-12	220/240	13	28	2.8-3.2	30	60
AC-15	220/240	13	28	3.5-4.6	40	75
AC-18	220/240	13	28	4.5-5.2	50	90
AC-20	220/240	13	28	6.2-8.5	60	100
AC-24	220/240	5	28	8.5-10.0	70	120
AC-30	220/240	5	28	10.5-12.8	80	150

ORP/pH/Temp Digital Controller



Model: TH-200

Features:

1. Easy to Install.
2. Simple to Operate.
3. Available for Fish Industries.
4. Clear Panel with all Functions.
5. Adjustable Alarm.
6. Overload Protection.
7. Waterproof Cabinet.

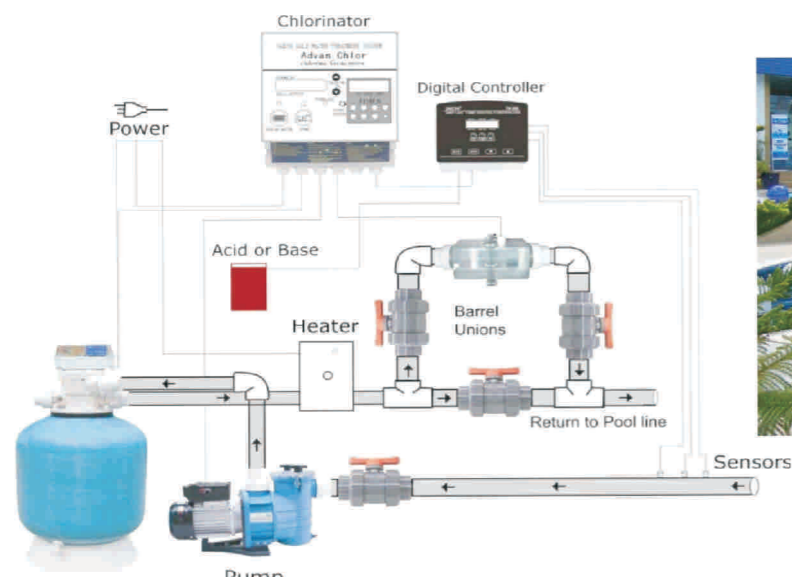


Model: TH-300

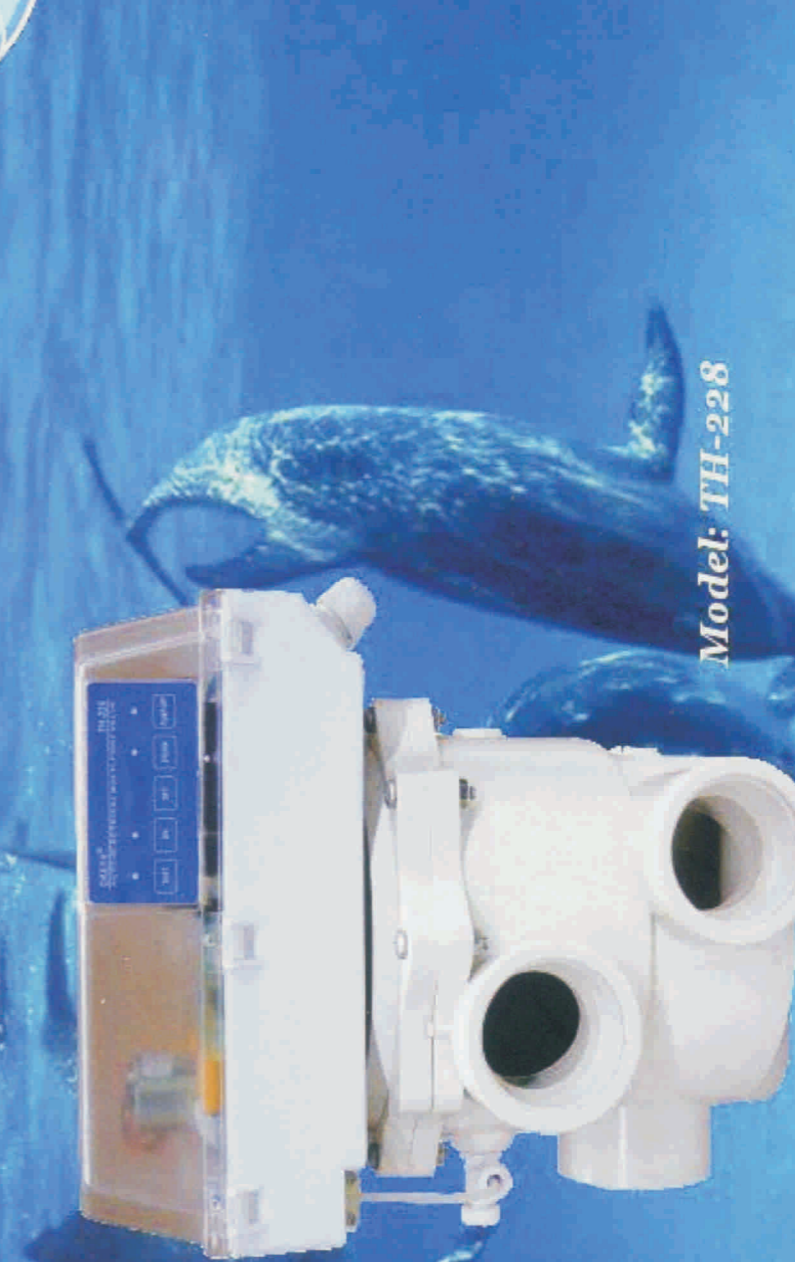
****TH-300 is optional model for PPM/ pH/Temp Digital Controller****



How it works..



Okeyh Electrical Six-Way Multit-Port Valve



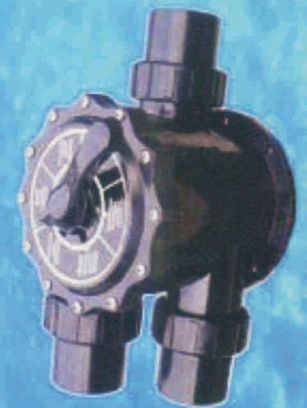
Model: TH-228



Model: HT-920
2" Side-Mount



Model: HT-915
1.5" Side-Mount



Model: HT-720
2" Top-Mount



Model: HT-715
1.5" Top-Mount

Electrical Six-Way Multiport Valve



Model:TH-228



Control Board

Electrical Six-Way Multi-Port valve, designed for fully automatic and cost-efficient centrifugal filter systems.

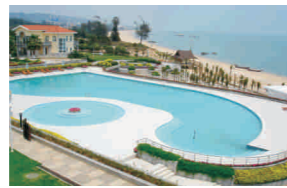
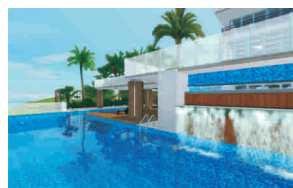
Application include Swimming Pool, Spa, Fish pond, Water Treatment Systems, Trick Fountains and cooling

Features:

1. Backwash Procedure can be controlled by pressure or timer setting automatically.
2. Available for 1.5" and 2" valves (Either Top-Mount and Side-Mount)
3. Connect with pump directly.
4. Quick and Easy installation.
5. Quick conversion without any additional tools and dismantling of the valve from automatic to manual override.
6. Four Procedure would be controlled by programming (Filter, Backwash, Rinse, Waste)
7. Pressure Data and Backwash Time would display on LED Digital Board.
8. Easy Setting Backwash Time, Rinse and Delay Time on Potentiometer Knob.
9. Functional usage in control Centrifugal Pump (Below 3HP Single Phase), Heater and Associated Ball / Butterfly Valves.



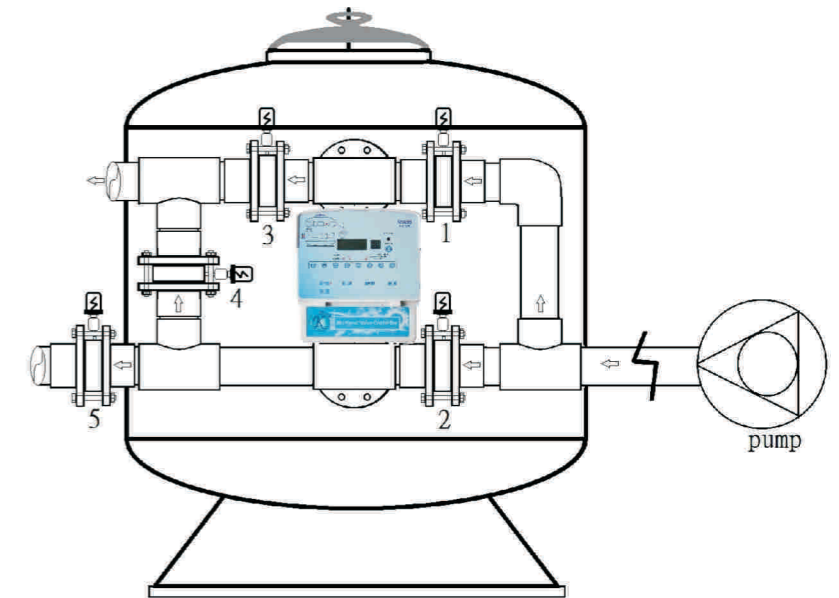
Electrical Six-Way Multi-Port valve



Electrical Multiport Valve Controller



Model:TH-388



New model Electrical Multi-Port Valve Controller TH-388 is designed for fully automatic and cost-efficient centrifugal filter systems.

Suitable for Swimming Pool, Spa, Fish Farm and Water Treatment Systems, etc.

Features:

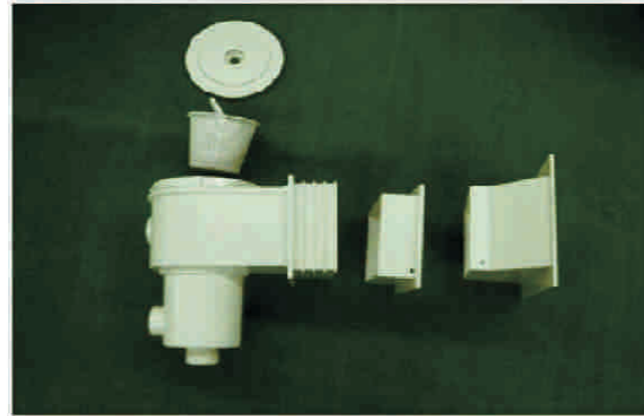
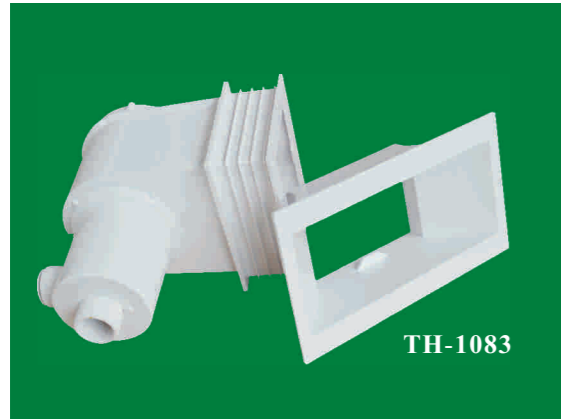
1. Easy to Install.
2. Simple to Operate.
3. Available for Fish Industries.
4. Clear Panel with all Functions.
5. Adjustable Alarm.
6. Overload Protection.
7. Waterproof Cabinet.
8. Suitable for Large Sand Filter.
9. Backwash Procedure can be controlled by pressure or timer setting automatically.
10. Quick conversion without any additional tools and dismantling of the valve from automatic to manual override.
11. Four Procedure would be controlled by programming (Filter, Backwash, Rinse, Waste)
12. Pressure Data and Backwash Time would display on LED Digital Board.
13. Easy Setting Backwash Time, Rinse and Delay Time on Potentiometer Knob.

NEW MODEL!!

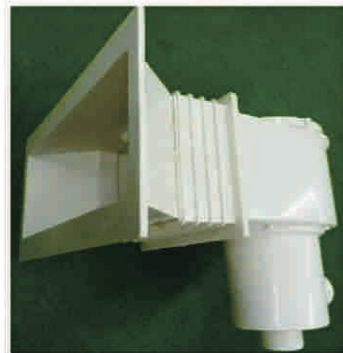
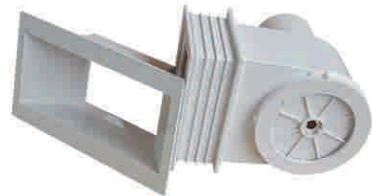


Pool Fittings and Accessories

Wall Mount Pool Skimmer TH-1083

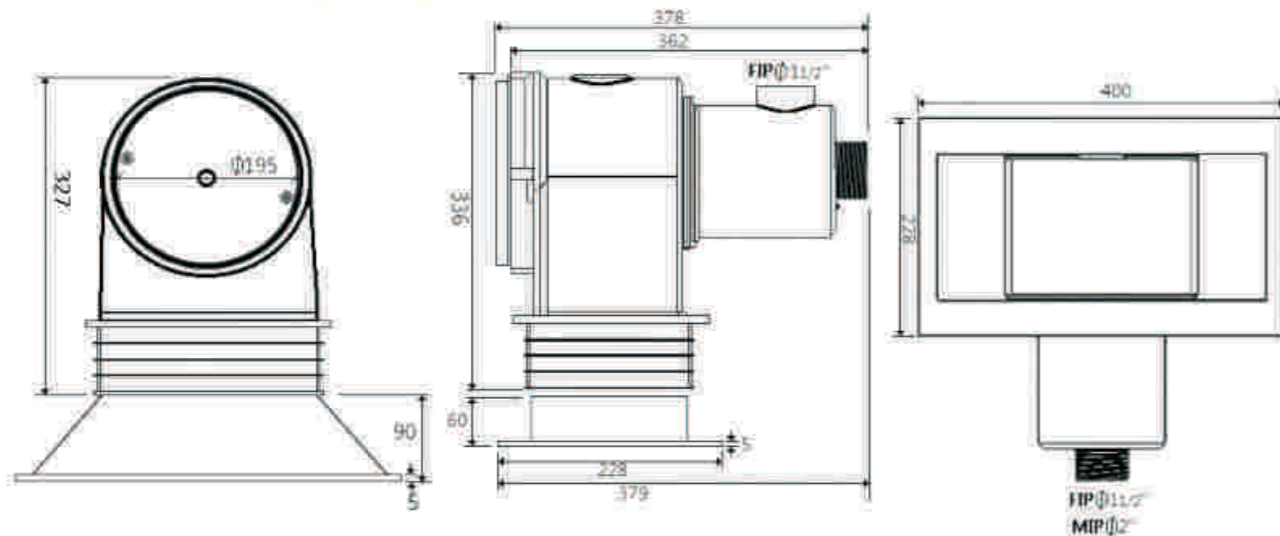


Multi-Skim TH-1083 is small in size and compatible in everywhere.

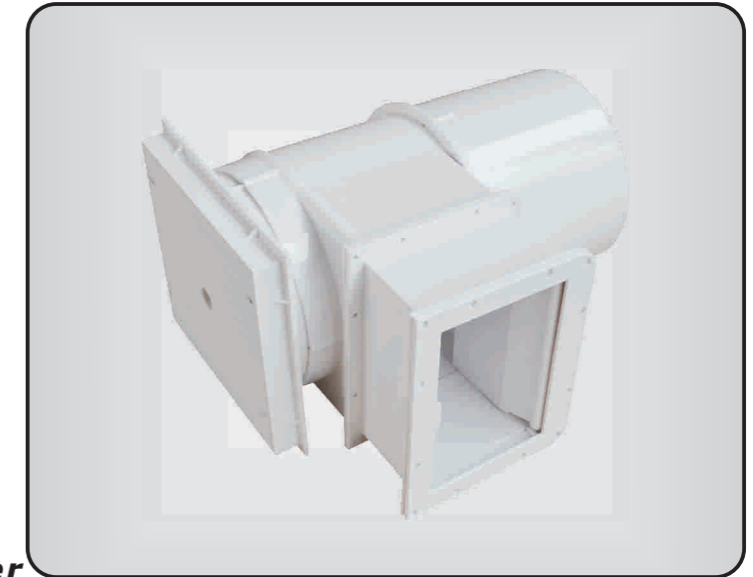
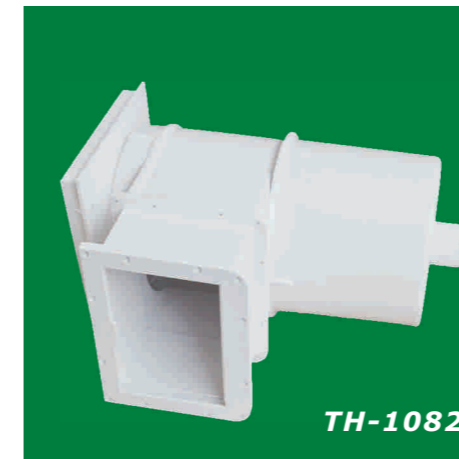


Features:

- 1. High Strength ABS made
- 2. Adjustable lid extension collars
- 3. Big enough strainer basket
- 4. Handy Vacuum Plate
- 5. Selection of throat lengths
- 6. Selection of pipe-connect direction (exclusive feature)



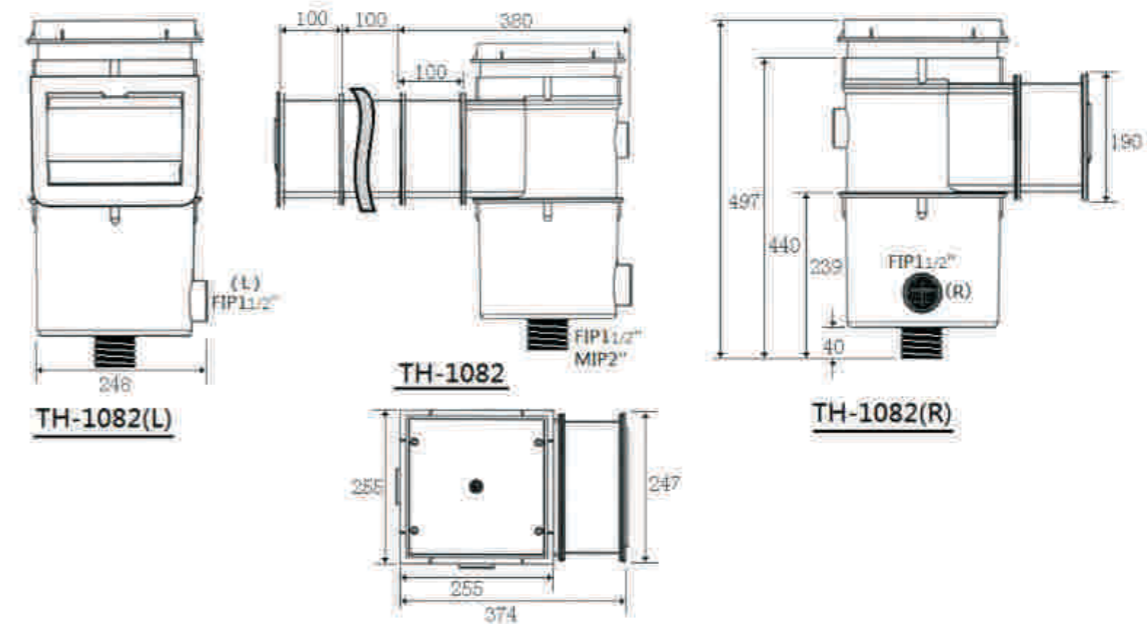
Wall Mount Pool Skimmer TH-1082



Multi-Skim TH-1082 skimmer offers a multi-function skimmer for all plumbing and construction requirements, configuration and materials.

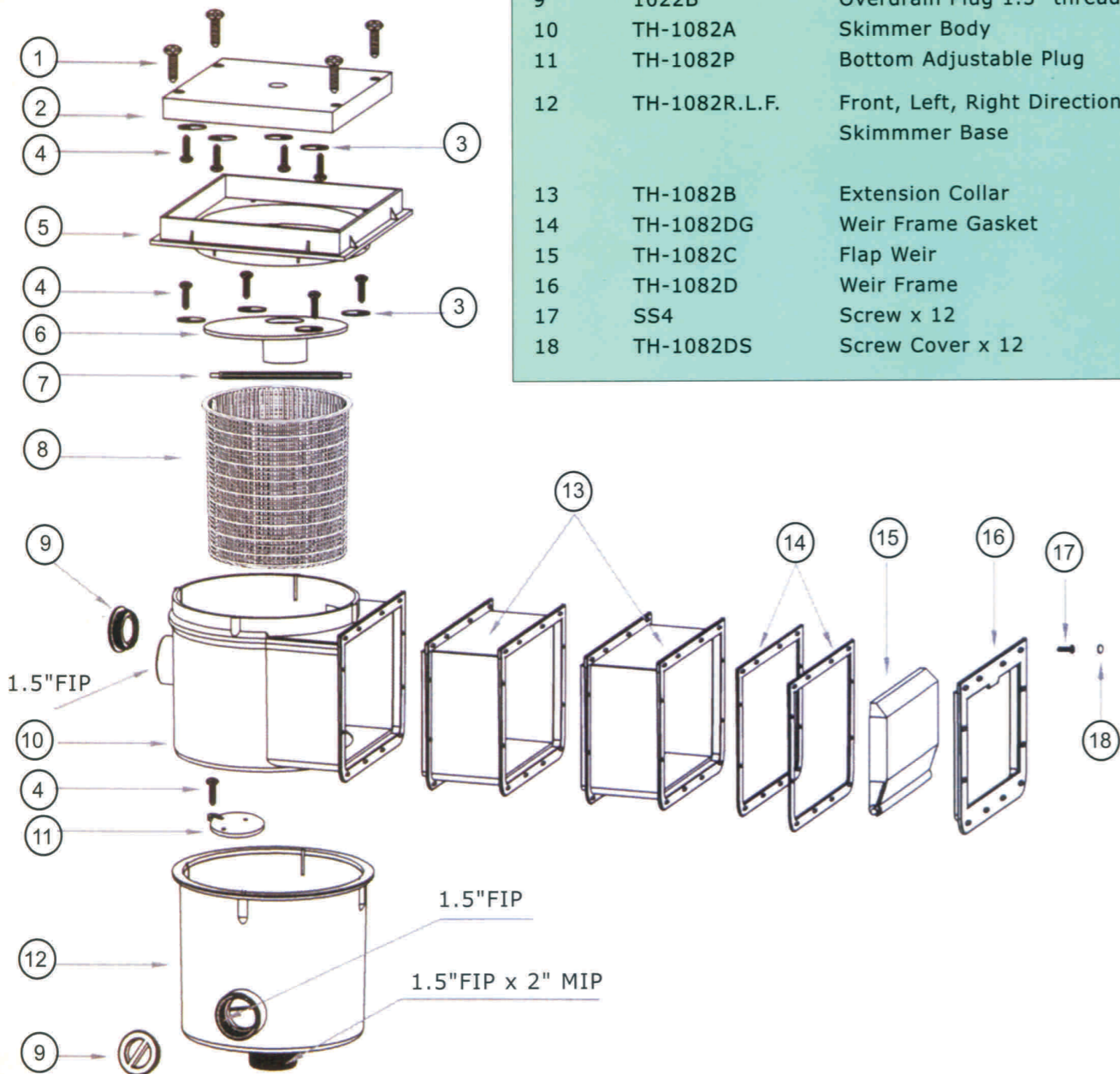
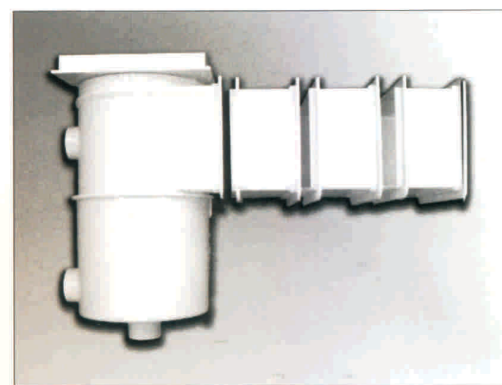
Advantages

- 1. High Strength ABS made
- 2. Adjustable lid extension collars
- 3. Big enough strainer basket
- 4. Handy Vacuum Plate
- 5. Selection of throat length



Wall Mount Pool Skimmer TH-1082

TH-1082 Parts Diagram



Parts List

Item	Part No.	Description
1	SS5	Lid screw x 4 (optional)
2	TH-1031D	Deck Lid
3	TH-1082PS	Plastic Lock x 8
4	SS3	Lock Screw x 9
5	TH-1031C	Lid Seat
6	TH-1082V	Vacuum Plate
7	TH-1082H	Strainer Basket Handle
8	TH-1082S	Strainer Basket
9	1022B	Overdrain Plug 1.5" thread
10	TH-1082A	Skimmer Body
11	TH-1082P	Bottom Adjustable Plug
12	TH-1082R.L.F.	Front, Left, Right Direction Skimmer Base
13	TH-1082B	Extension Collar
14	TH-1082DG	Weir Frame Gasket
15	TH-1082C	Flap Weir
16	TH-1082D	Weir Frame
17	SS4	Screw x 12
18	TH-1082DS	Screw Cover x 12

Wall Mount Pool Skimmer TH-1082

Extension Collar
The Extension Collar of Multi-Skim can be glued one by one for fitting different kinds of material construction (concrete, vinyl liner, mild steel & fiberglass pool).

Strainer Basket
Multi-Skim provides a large & durable strainer basket for the pool. It is more efficient.

Skimmer Body
Multi-Skim can be fitted in three different pipe direction - **Front, Left & Right**. This is easy and comfort for the installation. The installers will choose the suitable pipe-connect direction for them.

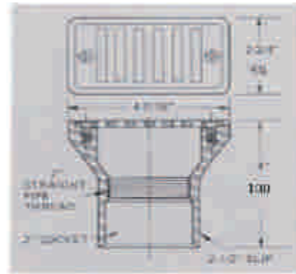
Vacuum Plate
Multi-Skim provides a flexible vacuum plate for the users. Vacuum plate can be hidden at the bottom of deck lid after using the pool vacuum.

Pool Fittings Accessories and Drains



HT-1019 Gutter

Attractive and Streamlined HT 1019 2' FIP plus 2 socket connection when white body and grate.



Optional Models :

- HT-1019N48(SKT 48MM)
- HT-1019N50(SKT 50MM)
- HT-1019N60(SKT 60MM)
- HT-1019N63(SKT 63MM)



Square Frames & Grates

Model No.	Size	Dim. A	Dim. B	Securing Screws
HT-1031	9" x 9"	8 15/16"	10 1/2"	4
HT-1032	12" x 12"	11 15/16"	13 1/8"	4
HT-1033	18" x 18"	17 3/8"	19 3/8"	8

SS-1031



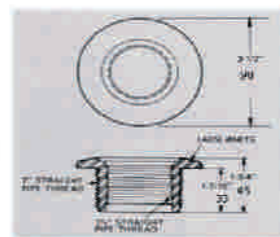
Made by ABS or Stainless Steel



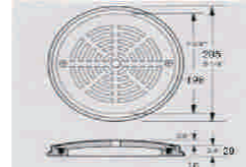
HT-1022+B



HT-1022B 1.5" Plug, white



Round Frames & Grates HT-1030 7 3/4" dia, white, with securing screws



Outlet Fitting Grate insert

HT-1026 1.5" MIP Install in any 1.5" FIP Wall outlet



HT-1026



Directional Flow Inlet Fitting Hydro stream

- HT-1419(1 1/2" MIP)
- HT-1419N(48MM/50MM socket)
- HT-1419B OR BN (10MM opening)
- HT-1419C OR CN (15MM opening)
- HT-1419D OR DN (20MM opening)



HT-1419

Pool Fittings Accessories and Drains



HT-1421

Hydrostream Insider Fitting

- HT-1421 (1"SKT X 1 1/2' SKT)
- HT-1421B (10mm opening)
- HT-1421C (15MM opening)
- HT-1421D (15MM opening)



Bull Eyes



HT-1519W

Wall Inlet (eye ball) White

- HT-1519W1, SKT 48MM OPENING 15mm
- HT-1519W2, SKT 50MM OPENING 20mm



HT-1522W

Vacuum fitting with plug, White

- HT-1522W1, SKT 48MM
- HT-1522W2, SKT 50MM



HT-1525W

Floor Inlet

- HT-1525W1, Eye ball SKT 48mm
- HT-1525W2, Eye ball SKT 50mm



HT-1526W

Grate insert as wall outlet

- HT-1526W1, Eye ball SKT 48mm
- HT-1526W2, Eye ball SKT 50mm



HT-1424S Inner:48mm



HT-1424SM Inner:50mm



HT-1424A 1.5" FIP x 2" MIP



HT-1424SB Outer:59.5mm



HT-1424N Inner:43mm Outer:51mm

Pool Fittings Accessories and Drains

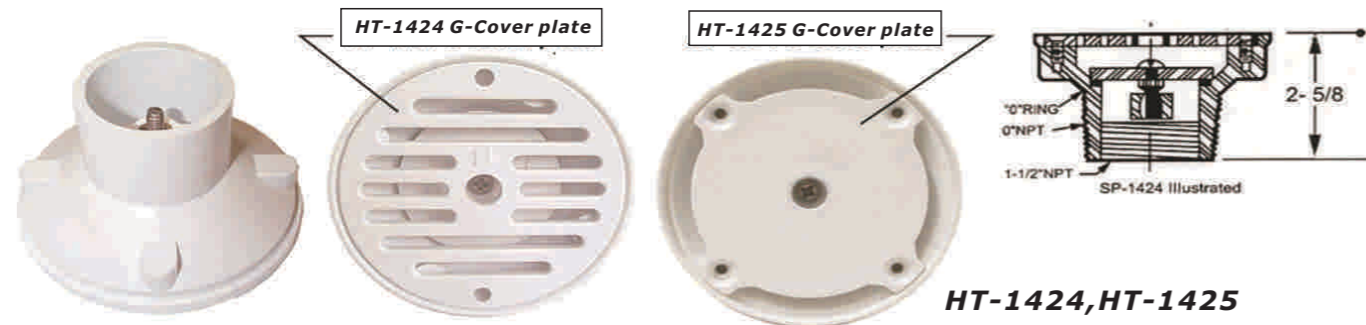


Commercial ABS Main Drain SP-1062

A full size ,non-corrosive and non-conductive main drain.

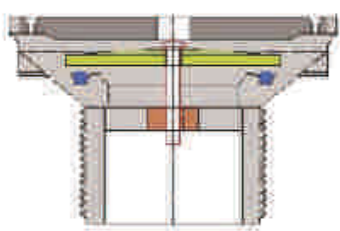
ABS body,9"x9' Square Frame and Grate(HT-1031B Grate)

**Side Outlet 1.5"FIP,
Bottom outlet 1.5"FIP x 2"MIP**

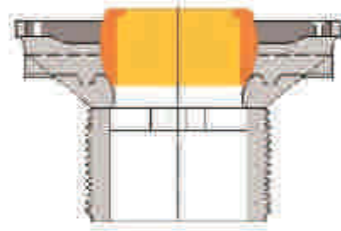


**HT-1424,HT-1425
Wall and Floor Inlets**

- White Body and grate
- Flow adjustment



HW-1625



HW-1619

NEW MODELS!!

**HW-1625, HW-1619
Wall and Floor Inlets**

**Standard: 3" MIP X 2" SKT (60mm)
Alternative: 2 1/2" SKT X 2" SKT (63mm)**

Pool Fittings Accessories and Drains



**SS-1424
Wall and Floor Inlets**



**SS-1022 + B
Vacuum Fitting & Flush Plug**



**HT- 501-503 Stainless Steel
HT 501A/B 1/2"
HT-502A/B 2"
HT-503A/B 3"**

Model A: Socket

Model B: Thread



HT-5011 Shower



**HT-1750
Stainless Steel Anchor**



HT-1031



SS-1031



HT-501

Pool Fittings - Jet Air Nozzle



HT-1434

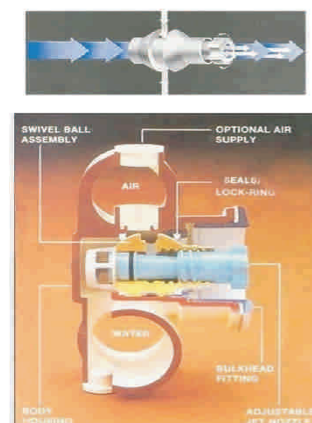
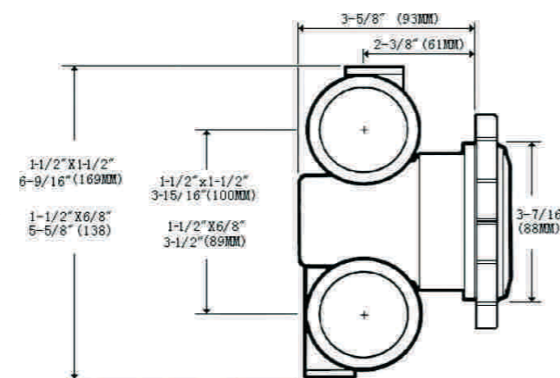


HT-1439

HT-1434 and HT-1439 Adjustable Jet-Air system offer interchangeable jet nozzles, allowing for multiple configuration options to achieve the type of hydro massage action you want, where you want it. And with adjustable Jet-Air system, you can control the water and air flow right at the jet face.

Features:

1. Air Supply access for optional 1/2" vertical air tube (if desired) for individual fitting.
2. Body Housing has PVC full-flo combination air and water connection for easy, efficient mani-folding. 6/8" and 1 1/2" size.
3. Adjustable Jet Nozzle is fully recessed and let you easily adjust water flow and jet intensity at each fitting.
4. Swivel Ball Assembly allows you to individually direct the water and air flow. Ball Seals and Lock Ring hold ball securely in place and gives smooth operation.
5. While allowing for easy removal of ball/jet assembly from inside spa for future cleaning or service.
6. Bulkhead fitting threads securely into main body housing to provide an attractive, dependable compression seal on spa wall.



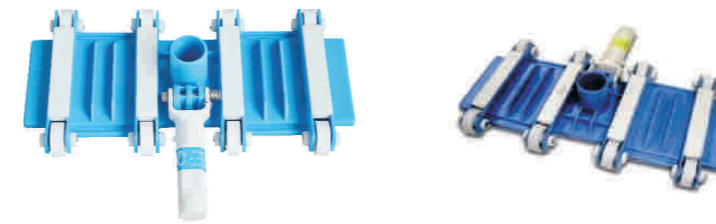
Model	Description
HT-1434PAKA1	body 1 1/2" air x 1 1/2" water (48x48mm)
HT-1434PAKA2	body 1 1/2" air x 1 1/2" water (50x50mm)
HT-1434PAKA3	body 6/8" air x 1 1/2" water (26x48mm)
HT-1434PAKA4	body 6/8" air x 1 1/2" water (25x50mm)
HT-1439PAKA1	body 4/8" air x 1 1/2" water (48mm)
HT-1439PAKA2	body 4/8" air x 1 1/2" water (50mm)
HT-1434PAKB	Fully adjustable and directional nozzle

Pool Accessories

HT-201

14" Economy Flexible Vacuum Head. 14" low profile with 4 weights under plastic covers.

Spring loaded snap-adapt handle, stainless steel hardware and adjustable wheels.



HT-2001



HT-718

HT-2001 & HT-718

HT-2001 18" Aluminum Back Wall Brush with nylon bristles.

HT-718 18" Aluminum Back Stainless Steel Algae bristles.

HT-712



HT-2002 & HT-712

HT-2002 12" Aluminum Back Wall Brush with nylon bristles

HT-712 12" Aluminum Back Stainless Steel Algae bristles.

HT-2012



HT-2011

HT-2012 & HT-2011

HT-2011 18" Plastic Back Wall Brush with nylon bristles.

HT-2012 12" Plastic Back Wall Brush with nylon bristles.



HT-B30 & HT-B31

This ring buoy features a completely waterproof, non-absorbent, closed-cell inner core and is equipped with poly-proylene grab lines

Pool Accessories



HT-402
Econo Leaf Rake.
 White molded frame with reinforced aluminum.
 Raised lip.
 Gray/Blue fiberglass net.



HT-124S
Leaf Skimmer.
 Polyester screen molded into polypropylene frame.
 Complete with magnet.
 Fits 1 1/4" poles.



HT-124SR

Leaf skimmer with Al handle & nylon round-hole net

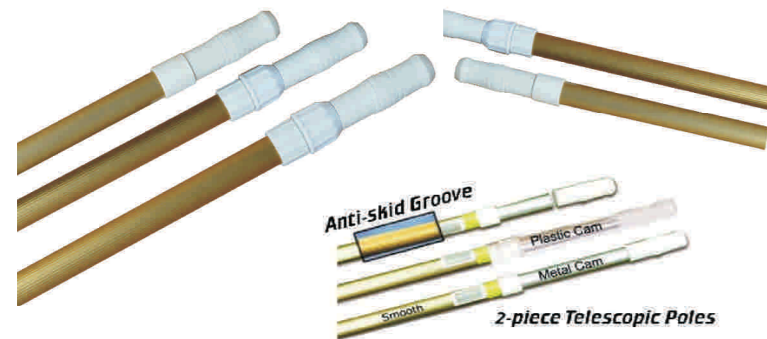
HT-125S

Leaf skimmer with durable plastic frame & nylon net



PE Tank for Pool Chemical Solution Storage

100L Litre - Dia 18" x 25" H
 120L Litre - Dia 20" x 27" H



Telescopic Poles Metal Cam (M) / Plastic Cam (P) with Anti-skid Groove (G) / Smooth Handle (S)

- A. HT-3700: 2m to 3.7m
- B. HT-4700: 2.5m to 4.7m
- C. HT-6700: 3.5m to 6.7m
- D. HT-7700: 4.0m to 7.7m



Vacuum Hose
 1. Light weight, durable, crush and kink resistant
 2. Highly flexible with swivel
 3. UV resistant

Model:
 A. VHC1520-1560B 1.5" x 20' to 60' length, single layer, blue
 B. VHS 1520-1560BB 1.5"x 20' to 60' length, dual layer, blue black
 C. VHE1520-1560WB 1.5" X 20' to 60' length, dual layer, white black



Pool Accessories



HT-127 HT-130 HT-133

HT-127 Tube Thermometer
 Molded ABS tube body.
 Thermometer has F and C scale in sealed glass tube.
 3' polyethylene cord.

HT-130 Chrome Thermometer
 Body molded of ABS with electro chrome plated finish.
 2' polyethylene cord.

HT-133 Floating Thermometer
 ABS tube case with flotation cap.
 F and C scale in sealed glass tube.



FD-303 FD-015 FD-301

Chemical Dispensers



KCL-220 KCL-200

Chemical Feeders



HT-752 "2 in 1" High Range Test Kit

The blue-hinged case with special clasp opens and close securely.

Contains 3/4 oz Phenol Red with pre-blended neutralizer and 3/4 oz OTO.

Stand up test block, waterproof instruction card and full color 12 packs counter display. pH ranges 6.8-8.2 CL ranges 0.3-3.0



New Size!!
8oz (243ml) Bottle

PVC Pipe Fittings



Pump Check Valve



HT-1615
KL Pump Check Valve



HT-1620
KT Pump Check Valve



Bulkhead Fitting



FU-001-004



FU-005-006



2-ways Valve Union / Check Valve
(Straight)



PVC Union
Range: 1.5" , 2" and 2.5"



1.5" Connect



2" Connect



2.5" Connect

PVC Pipe Fittings



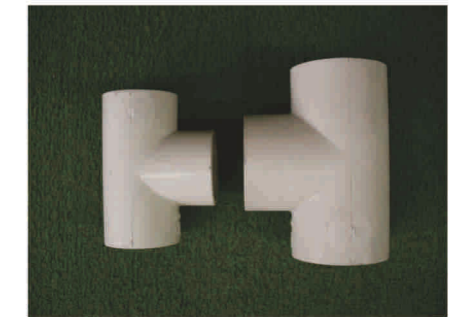
2-way Ball Valve
Range: 1.5" - 4"



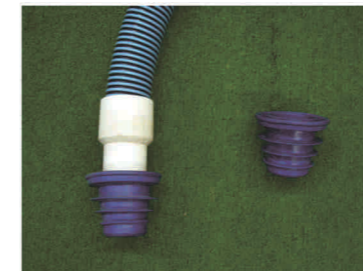
Butterfly Valve
(Handle Lever Type)
Range: 3" - 8"



90 Degree Elbow Socket

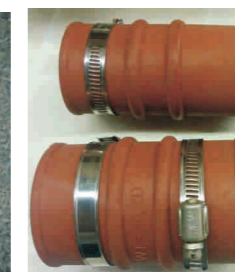


Tee Socket



Vacuum hose adaptor

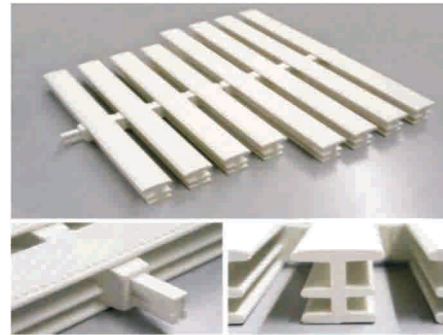
VH-WS
(plug in 1.5" and 2" inch
easily)



Flexible Joint

WT-SK15 (1.5")
WT-SK20 (2")

Pool Plastic Grating



Model: HTS-2525

Features:

1. Coupling unit for adjustment between modules.
2. Loose Pressure joint module.
3. 31 units per meter.
4. Buyer could choose different width as their need.

Range: 300MM - 150MM



Pool Racing Lane and Float Ball

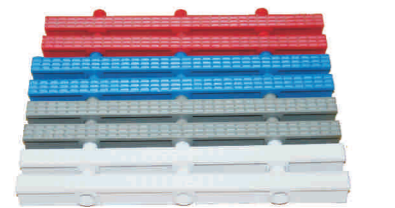


Model: HT808 Helix Groove Handy Lock Float

1. The Helix Grooves on the floats give the anti-wave ability for the floats, which can be handily locked on the rope.
2. Four colors of Helix Groove Handy Lock Floats are available: Red, Blue, Orange, and White.
3. There are more combinations of the floats for users' choices.
4. The inside diameter of float are provided to accommodate 3/8" or 10mm polypropylene rope.



HT-808

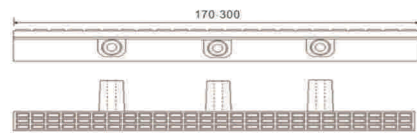


Model: HT-E300

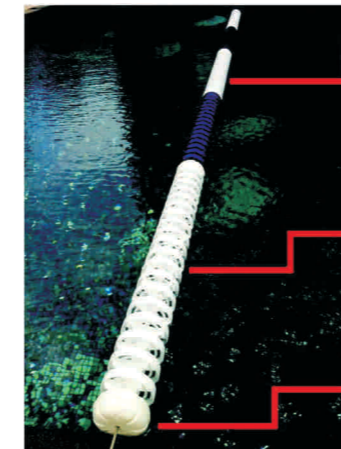
Features:

1. Coupling unit for adjustment between modules
2. Colour Options: Gray, Red, Blue, Apricot, Black, Beige
3. Buyer could choose different width as their need.

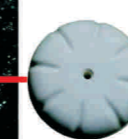
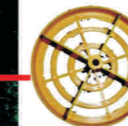
Range: 70-300MM



Competitive Racing Lane interlocking discs



RE 425



1. Can stop the wave's lateral movement and divert the force along the length of the lane.
2. The cable is 304 stainless steel.
3. The tension reel can be SUPER-TENSIONER or Comp Ratchet Take Up Reel.

Model:

- HT-RL425 Anti-wave racing lane 25M with 4" disc.
- HT-RL450 Anti-wave racing lane 50M with 4" disc.
- HT-RL625 Anti-wave racing lane 25M with 6" disc.
- HT-RL650 Anti-wave racing lane 50M with 6" disc.



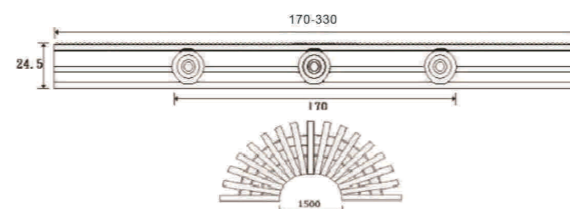
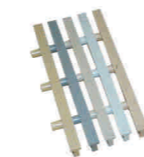
New

Model: HT-E330

Features:

1. Coupling unit for adjustment between modules
2. Colour Options: Gray, Red, Blue, Apricot, Black, Beige
3. Buyer could choose different width as their need.

Range: 70-330MM



HT-49 Super Tensioner for racing lane

1. Each lane comprise a number of discs (injection molded in durable polyethylene, with additives for maximum UV and Chemical resistance) threaded onto a 2000# test strength 20-strand stainless steel cable.
2. Interspersed between the discs, seated into the recesses provided, are avoid below-molded floats.
3. One end of the cable is secured by means of copper sleeves to form a loop holding a stainless steel eyelet, into which is fitted a stainless steel S-hook.
4. The opposing end of the lane is fitted with the unique Super-Tensioner, a turnbuckle tensioning device.



HT-49G Super Tensioner in Green colour
HT-49R Super Tensioner in Red colour



HT-49G Super Tensioner in Green Color

HT-49R Super Tensioner in Red Color

Pool Racing Lane and Float Ball

Clamp-Type Rope Hooks



HT-47
Chrome plated bronze for 5/8" and 3/4" rope



HT-45
Chrome plated bronze for 3/8" and 1/2" rope



S Hooks



Clamp-Type Rope Hooks



HT-380
Flexible Floats
Size: 70MM * 65MM
Colour: red



HT Handy-Loch Floats

HT Handy-Loch Floats are made of linear polyethylene treated with chlorine inhibitors and UV stabilizers for durability and long life.

Model:

- HT-50535R 3"x5" Red/White/Red
- HT-80535B 3"x5" Blue/White/Blue
- HT-80535Y 3"x5" Yellow/White/Yellow



Pool Lights and Fountain Lights

Wall Mount Pool Lights

Pool Light recessed swimming pool luminary without transformer, for concrete plastic sheet, metal or plastic pool with:

PAR Series

1. One low voltage reflector lamp
2. PAR 56, 12V, 100W 200W 300W, 140°/40°
3. 12V AC/DC, 15W-40W LED
4. Protection Class 1P68 3M
5. Electro-polished stainless steel
6. 3-30M waterproof cable
7. Safety Class III



PAR56



PAR 36

Recommended installation depth is 500-700MM below water level.

The luminary may only be operated underwater.



PL-300

PL-100

PAR - PL Series

PAR- PL Series 100W, 300W 12V
(with ss face ring, installed with niches)

PAR36:

- PL 10005: 100 Watt, 12 Volt, 5M Cord
- PL 10010: 100 Watt, 12 Volt, 10M Cord
- PL 10015: 100 Watt, 12 Volt, 15M Cord

PAR56:

- PL 30005: 300 Watt, 12 Volt, 5M Cord
- PL 30010: 300 Watt, 12 Volt, 10M Cord
- PL 30015: 300 Watt, 12 Volt, 15M Cord
- PL 30030: 300 watt, 12 Volt, 30M Cord



Wall Mount Pool Lights

PLP Series

Chromplated face ring (optional)

PLP series - 300W 12V

(Plastic face ring, installed with niches)

PLP30005: 300Watt,12Volt,5M Cord

PLP30010: 300Watt,12Volt,10M Cord

PLP30015: 300Watt,12Volt,15M Cord

PLP30030: 300Watt,12Volt,30M Cord



PLP Series

PS Series

1. Provides brilliant double contact halogen quartz lighting for spas and vinyl liner pools

2. Uses a mounting hub instead of a niche eliminates costly make-up panels

Model:

PS 10005: 100Watt,12Volt,5M Cord

PS 10010: 100Watt,12Volt,10M Cord

PS 15005: 150Watt,12Volt,5M Cord

PS 15010: 150Watt,12volt,10M Cord



pvc Niches

PVC Niches

PLN-2500

Large PVC Niche

Compatible with

PL/PLP300XX

7843XXXX and SP581/2

PLN-1500

Small PVC Niche

for

fixture



LED

Pool Light and Fountain Light Series



LED Pool Lights and Fountain Lights Series



LED (Light Emitting Diode) is a type of semi-conductor diode that emits light when current passes through it. Our LED Pool Lights contains several high technology components that are MCPCB & LED Emitter. It successfully distribute LED Light spirit.

OKEYH LED pool Light can be operated in fish ponds, swimming pools and fountain.



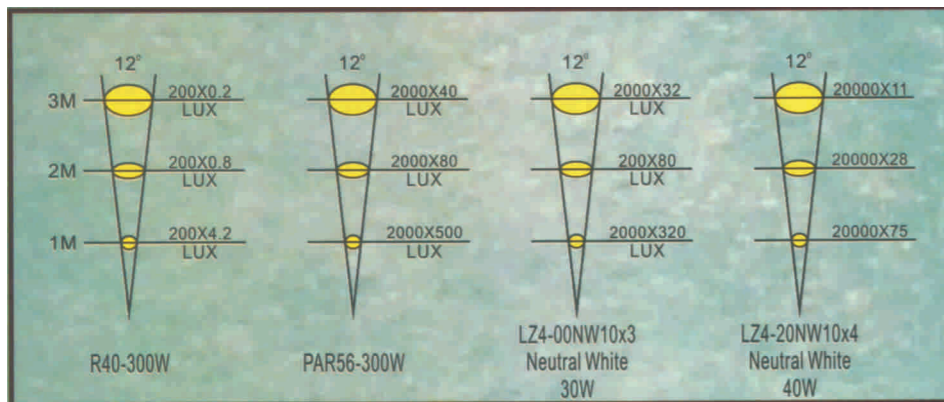
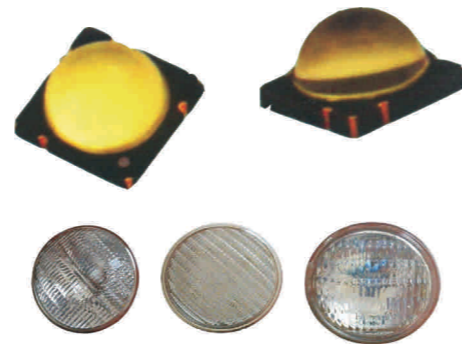
Metal Core PCB

MCPCB provide a convenient method to mount with emitters. The six recessed features allow the use of M3 or #4 screws to attach the MCPCB to a heat sink.

Neutral white LED Emitter

The Neutral white LED Emitter provides 10W power in extremely small surface mount ceramic package with integrated glass lens.

The high quality material used in the package are chosen to optimize light output and minimize stresses which results in monumental reliability and lumen maintenance.



Transformer Controller



Electrical Junction Box



LED Pool Lights and Fountain Lights Series



LED (Light Emitting Diode)

1. A type of semi-conductor diode that emits light when current passes through it.
2. Our LED Series is formed by gathering a number of LED that are controlled by integrated circuits on a circuit board.
3. It is suitable for fish ponds, pools and fountain.

Features:

1. Voltage(AUDC):12V/24V
2. Energy Saving.
3. Stability and Safety.
4. Life-span typically: 5,000 hours
5. Power: 7, 14, 21, 28 Watt
6. Cord Length: 5-30 meters

Model Available:

- PL 30005 to PL 30030,
- PLP 30005 to PLP 30030,
- PS 10005 to PS 15010



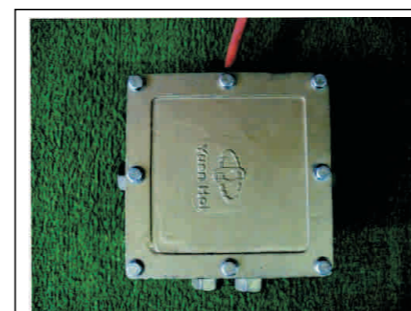
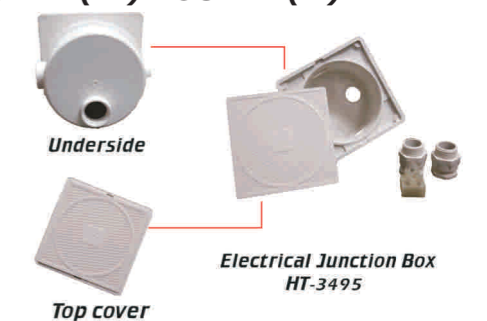
Electrical Junction Box

Plastic
HT-3495

1. Rigid cover with O-ring for sealing
2. With electrical connectors

Dimension: 129mm (L) x 129mm (W) x 95mm (H)

Opening 105mm diameter



Underwater circuit box
(water used)

LED Pool Lights and Fountain Lights Series

LED Lamp

Features:

1. Color of LED bulb could have many options such as red, yellow, green, blue and white.
2. However every light an only install same colour bulb only.
3. Waterproof and circuit leak-proof & corrosion resistance.
4. Low power consumption.
5. High Luminous intensity.

Technical Data:

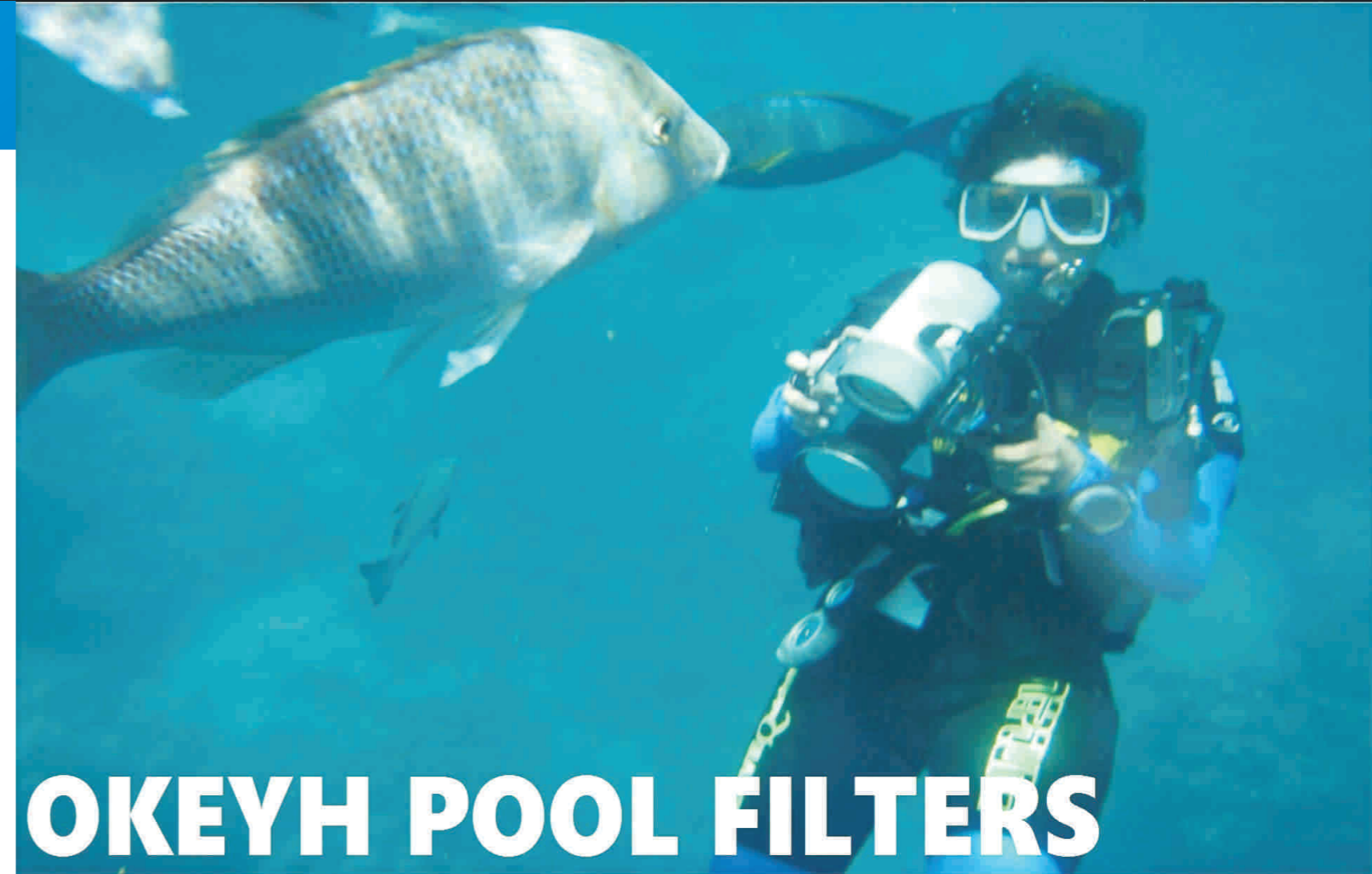
Voltage (AC/DC): 12V/24V

IEC Protection: Ip68 Insulation Class A

LED Life Typically: 20000 hours

Watt: 3-10 watt

Cord Length: 2.5M

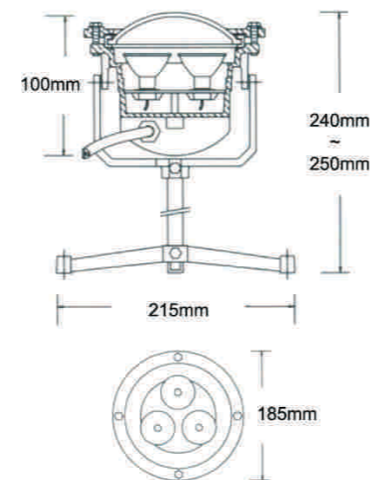


OKEYH POOL FILTERS

NEW LASER PRINTING!!

Features:

1. Durable
2. Not frivolous
3. Suitable for outdoor use
4. Simple and clear
5. Easy for cleaning
6. Save money and time
7. Environmental- Instead of paper labels
8. D.I.Y own brands/logos



- Halogen Bulbs
- Cast bronze construction fountain light
- Clear lens, tripod stand also available

Model:

FL-B07005: 12V 70W, 5M cord (35W X 2)

FL-B10005: 12V 100W, 5M cord (50W x 2)

FL-B15005: 12V 150W, 5M cord (50W x 3)



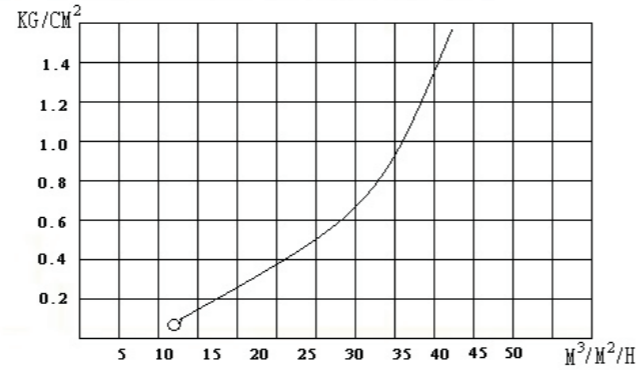
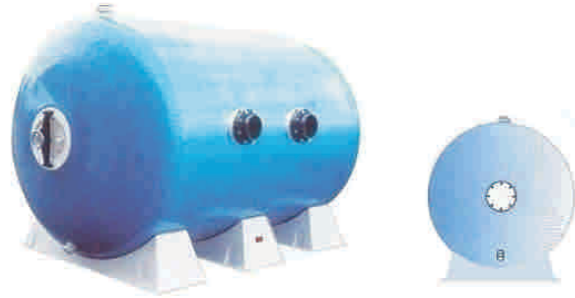
Halogen Lamp



Okeyh, Your Pool Master!

Filters

Horizontal Bobbin Wound Sand Filter



- *The horizontal sand filters made with polyester resin and winding glass fiber can be applied to the water filtration in public pools, aquatic parks, irrigation water and water treatment in general.
- *They provide a great surface area for filtration with a limited space and a very economic costs.
- *Manual or automatic valve battery are available with 3" to 8" depending on the filtration rate required.
- *The standard models of horizontal filters can work under pressure 2.5 bar or 4 bar.
- *Custom-made horizontal filters can be made if required and possible.

Features:

1. With bobbin wound body large man hole
2. Inlet & outlet with flanges, sand and water drain included
3. Filtration bed depths 0.6m or 1.0m or 1.2m
4. Working pressure 2.5 bar or 4 bar
5. Lateral collector, manometer panel & air-bleed system
6. Lateral inspection hole optional



Filter Model	Dia.mm	Length mm	Area m ²	Flange B	Flow Rate m ³ /h	Filter.Rate m ³ /m ² /h	Pressure bar	Sand Weight (KG)
FH-1001503B25	1000	1500	1.3	3"	26-52	20-40	2.5	1126
FH-1002004B25	1000	2000	1.8	4"	36-72	20-40	2.5	1502
FH-1402506B25	1400	2500	3.22	6"	64.4-128.8	20-40	2.5	3681
FH-2002506B25	2000	2500	4.6	6"	92-184	20-40	2.5	7500
FH-2003206B25	2000	3200	6	6"	120-240	20-40	2.5	9600
FH-1002003B40	1000	1500	1.3	3"	26-62.4	20-48	4	1126
FH-1002004B40	1000	2000	1.8	4"	36-86.4	20-48	4	1502
FH-1402506B40	1400	2500	3.22	6"	64.4-154.6	20-48	4	3681
FH-2002506B40	2000	2500	4.6	6"	92-220.8	20-48	4	7500
FH-2003206B40	2000	3200	6	6"	120-288	20-48	4	9600

FA(DFB) Series - Deep Bed Type 1



Height
2000mm

with side hole
for easy installation
or maintenance



FA Series - Deep Bed Type 1(DFB) filter are manufactured with lateral collector .

Their high quality filtration ability thanks to the large and deep filtering bed both on filtering area and depth.

They include drain, pressure gauge , multiport valve and connecting parts to filter.

Connecting: 2" / 60mm / 63mm

Max. working pressure: 2.5 bar or 2.5 kwcm2

Max. temperature:40° C

Model	Dia.mm	Flow Rate m ³ /h	Mp Value Side-mount	Height mm
DFB-003	750	13	HT-920	2000
DFB-004	900	19	HT-920	2000